

**US Army Corps of Engineers**  
 Jacksonville District  
 SAFETY ON THIS JOB  
 DEPENDS ON YOU

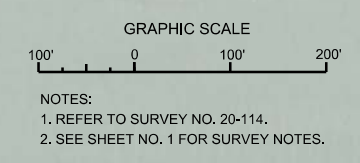
DEPARTMENT OF THE ARMY  
 JACKSONVILLE DISTRICT, CORPS OF ENGINEERS  
 JACKSONVILLE, FLORIDA

Drawn by: GHR  
 Checked by: GHR  
 Date: MAY 2020

GULF INTRACOASTAL WATERWAY TO THE RIVER  
 CALOOSAHATCHEE RIVER  
 PINELLAS COUNTY, FLORIDA  
**HYDROGRAPHIC EXAM SURVEY FY20**  
**9-FOOT PROJECT**  
 STA. 29+00 CUT P-23 THRU STA. 4+00 CUT P-26  
**PLAN**

Scale: AS SHOWN  
 Drawing no. **41**  
 SHEET 41 OF 78

MAP LABEL	AIDS TO NAVIGATION	PLANE COORDINATES		LATITUDE	LONGITUDE
		X	Y		
R*10"	DBN-10 (05/20)	385,554	1,275,687	27°50'26.25"	82°50'14.52"
G*11"	LT-11 (05/20)	385,303	1,275,937	27°50'28.71"	82°50'17.34"
R*12"	DBN-12 (05/20)	385,352	1,276,570	27°50'34.98"	82°50'16.83"
R*14"	DBN-14 (05/20)	385,314	1,277,220	27°50'41.42"	82°50'17.31"
G*15"	DBN-15 (05/20)	385,016	1,277,483	27°50'44.00"	82°50'20.65"
G*17"	LT-17 (05/20)	384,465	1,278,178	27°50'50.84"	82°50'26.83"
R*18"	DBN-18 (05/20)	384,517	1,278,590	27°50'54.92"	82°50'26.293"
SIGN	SIGN (05/20)	385,412	1,278,556	27°50'24.94"	82°50'16.09"



















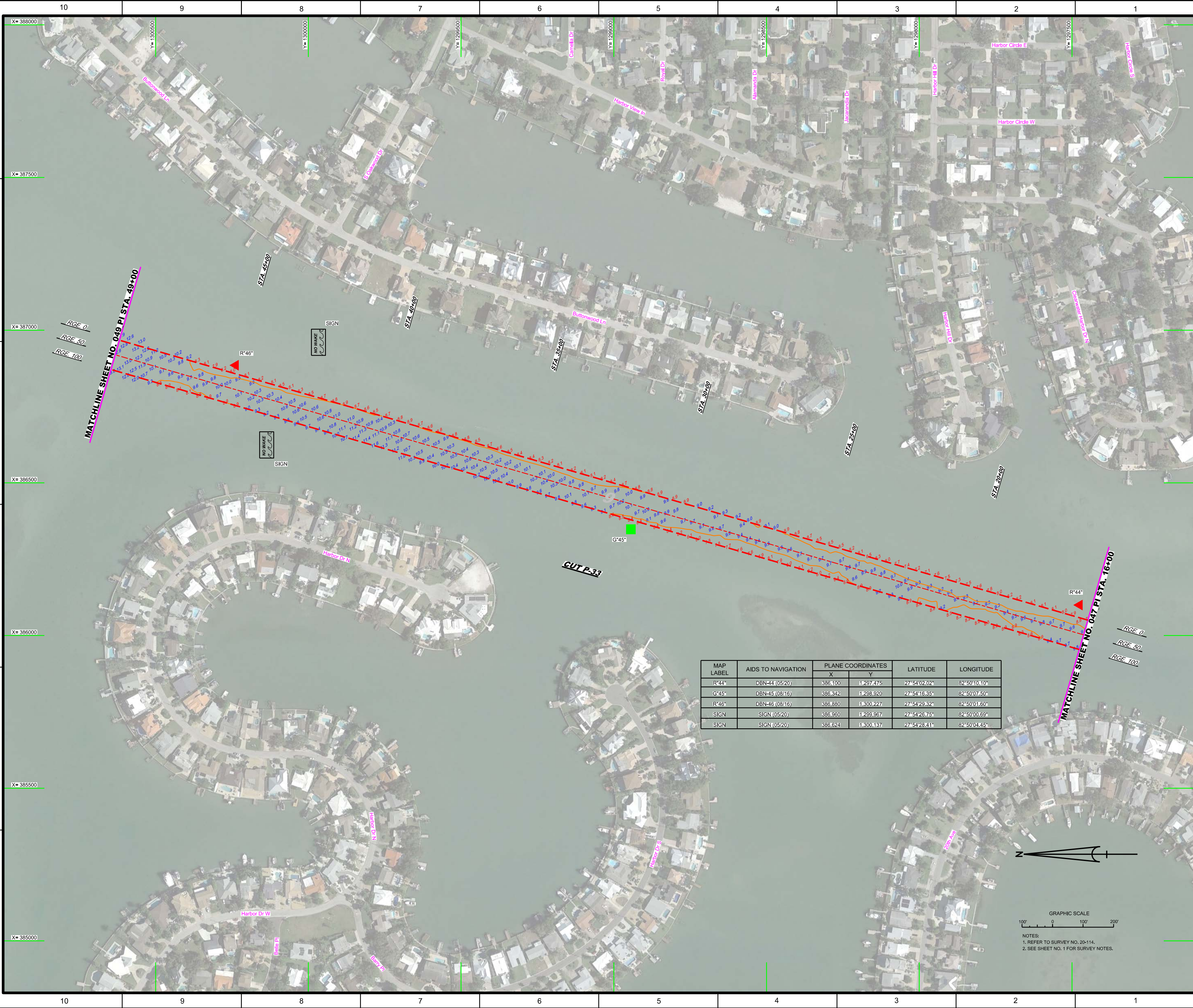














 US Army Corps of Engineers  
 Jacksonville District  
**SAFETY ON THIS JOB DEPENDS ON YOU**

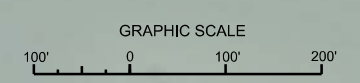
DEPARTMENT OF THE ARMY  
 JACKSONVILLE DISTRICT, CORPS OF ENGINEERS  
 JACKSONVILLE, FLORIDA

Checked By:	GHR
Designed By:	WRM
Drawn By:	WRM
File No.:	20-114-CON.DGN
Drawn Date:	MAY 2020

**HYDROGRAPHIC EXAM SURVEY FY20**  
**9-FOOT PROJECT**  
 STA. 16+00 THRU STA. 49+00 CUT P-33  
**PLAN**

Scale: AS SHOWN  
 Drawing no.  
**48**  
 SHEET 48 OF 78

MAP LABEL	AIDS TO NAVIGATION	PLANE COORDINATES		LATITUDE	LONGITUDE
		X	Y		
R*44	DBN-44 (05/20)	386.100	1297.475	27°54'02.02"	82°50'10.10"
G*45	DBN-45 (08/16)	386.342	1298.920	27°54'16.35"	82°50'07.50"
R*46	DBN-46 (08/16)	386.880	1300.227	27°54'29.32"	82°50'01.60"
SIGN	SIGN (05/20)	386.960	1299.957	27°54'26.75"	82°50'00.69"
SIGN	SIGN (05/20)	386.624	1300.137	27°54'28.41"	82°50'04.45"



NOTES:  
 1. REFER TO SURVEY NO. 20-114.  
 2. SEE SHEET NO. 1 FOR SURVEY NOTES.





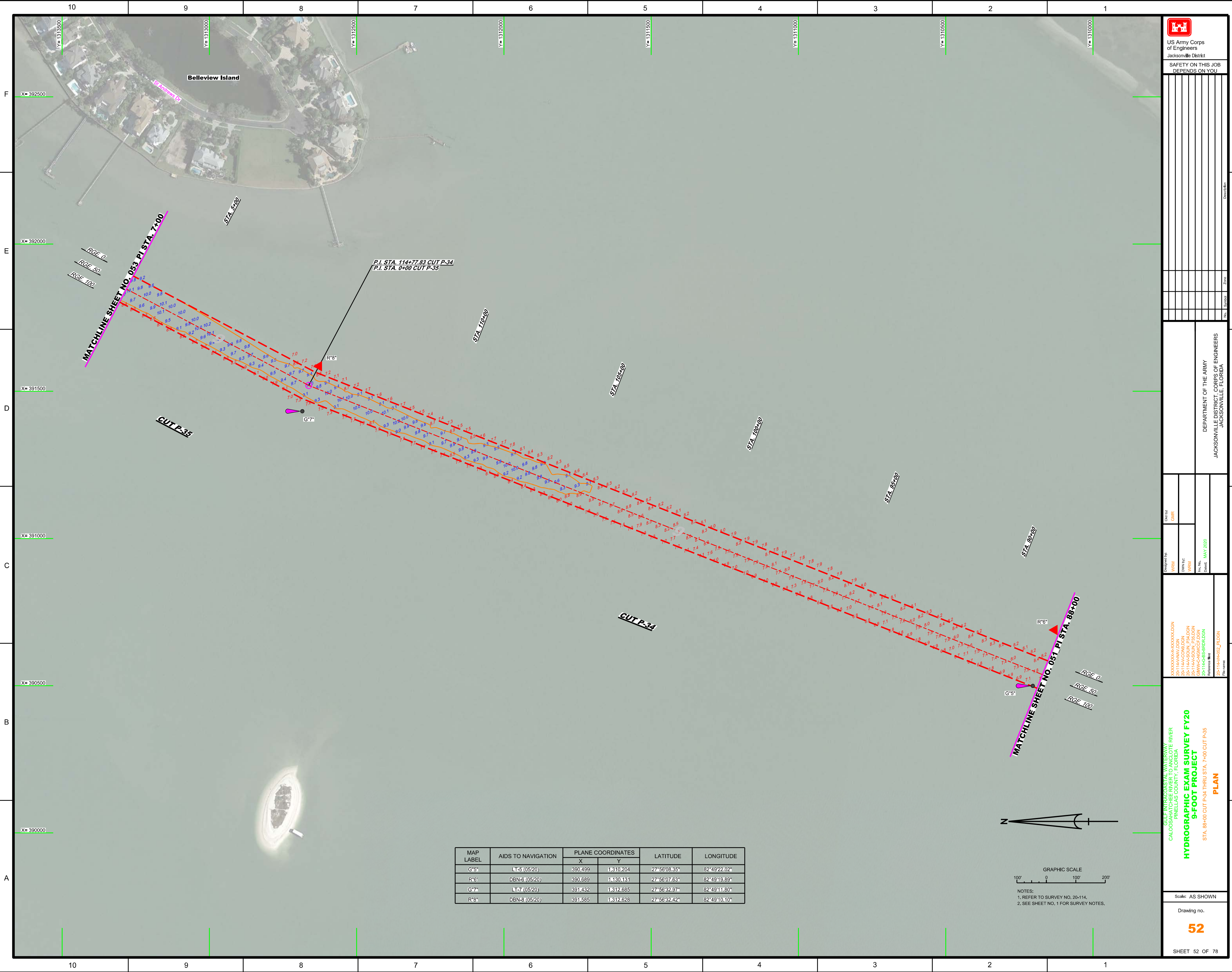













  
 US Army Corps of Engineers  
 Jacksonville District  
 SAFETY ON THIS JOB DEPENDS ON YOU

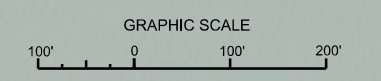
DEPARTMENT OF THE ARMY  
 JACKSONVILLE DISTRICT, CORPS OF ENGINEERS  
 JACKSONVILLE, FLORIDA

Call by: GMR  
 Designed by: WRM  
 Drawn by: WRM  
 File No.: 20-114-0001  
 Date: MAY 2020

GULF INTRACOSTAL WATERWAY AT THE RIVER  
 CALOOSAHATCHEE RIVER  
 PINELLAS COUNTY, FLORIDA  
**HYDROGRAPHIC EXAM SURVEY FY20  
 9-FOOT PROJECT**  
 STA. 88+00 CUT P-34 THRU STA. 7+00 CUT P-35  
**PLAN**

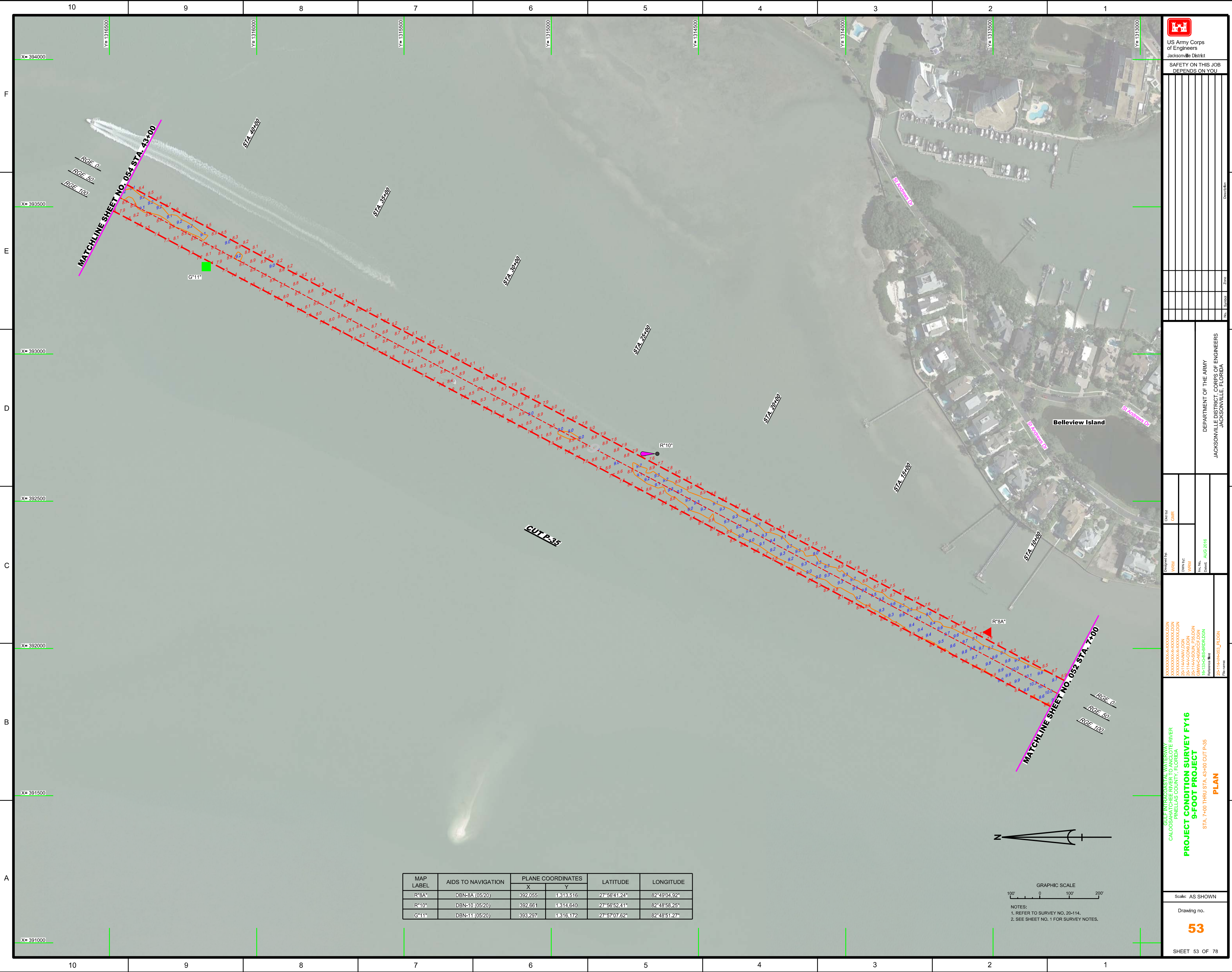
Scale: AS SHOWN  
 Drawing no.  
**52**  
 SHEET 52 OF 78


MAP LABEL	AIDS TO NAVIGATION	PLANE COORDINATES		LATITUDE	LONGITUDE
		X	Y		
G5*	LT-5 (05/20)	390,499	1,310,204	27°56'08.35"	82°49'22.02"
R6*	DBN-6 (05/20)	390,689	1,310,131	27°56'07.63"	82°49'19.89"
G7*	LT-7 (05/20)	391,432	1,312,685	27°56'32.97"	82°49'11.80"
R8*	DBN-8 (05/20)	391,585	1,312,628	27°56'32.42"	82°49'10.10"



NOTES:  
 1. REFER TO SURVEY NO. 20-114.  
 2. SEE SHEET NO. 1 FOR SURVEY NOTES.





  
 US Army Corps of Engineers  
 Jacksonville District  
 SAFETY ON THIS JOB  
 DEPENDS ON YOU

DEPARTMENT OF THE ARMY  
 JACKSONVILLE DISTRICT, CORPS OF ENGINEERS  
 JACKSONVILLE, FLORIDA

Call by: GMR  
 Designed by: WRM  
 Drawn by: WRM  
 File No: AUG 2018  
 Date: AUG 2018

GULF INTRACOASTAL WATERWAY  
 CALOOSAHATCHEE RIVER  
 PINELLAS COUNTY, FLORIDA  
**PROJECT CONDITION SURVEY FY16**  
**9-FOOT PROJECT**  
 STA. 7+00 THRU STA. 43+00 CUT P-35  
**PLAN**

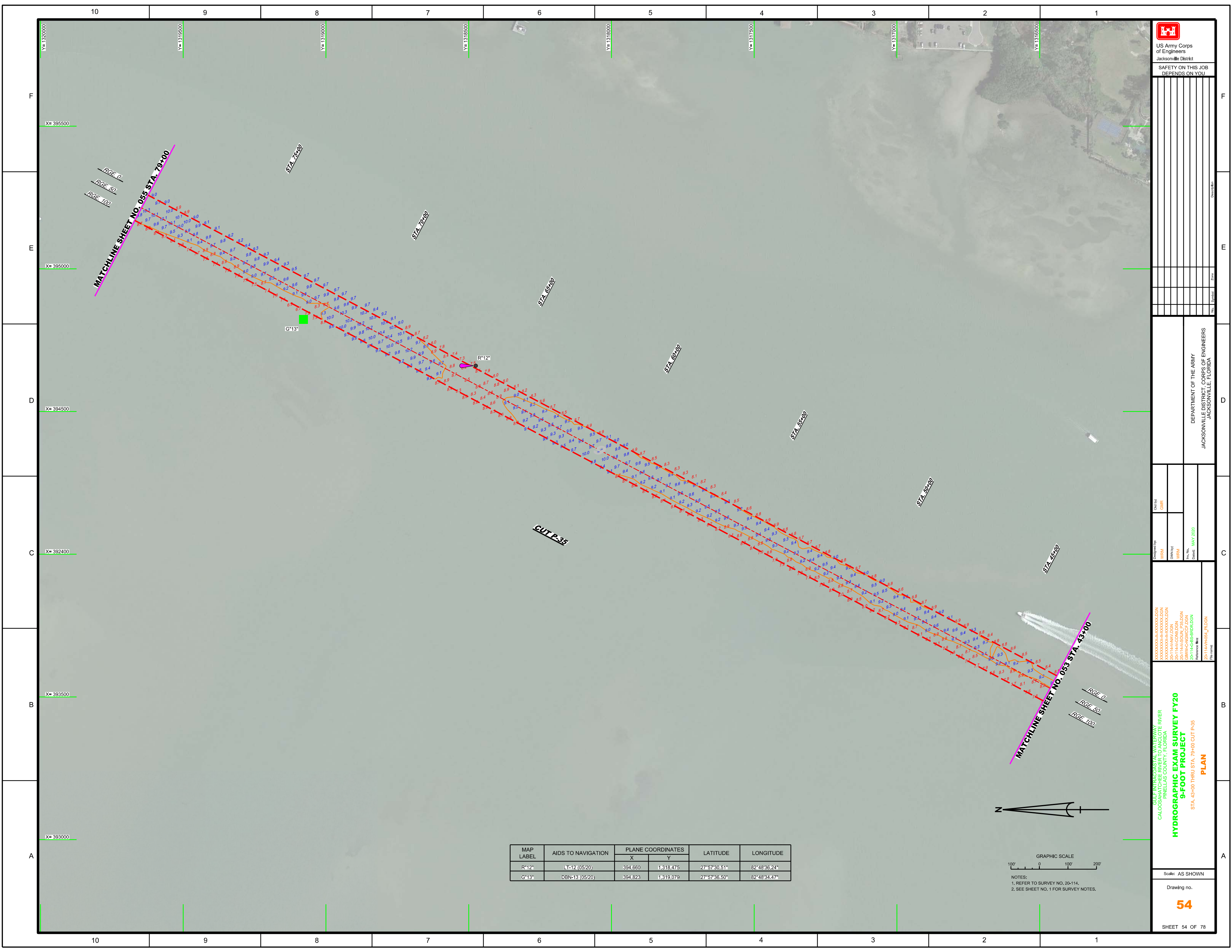
Scale: AS SHOWN  
 Drawing no.  
**53**  
 SHEET 53 OF 78


MAP LABEL	AIDS TO NAVIGATION	PLANE COORDINATES		LATITUDE	LONGITUDE
		X	Y		
R*8A"	DBN-8A (05/20)	392,055	1313,516	27°58'41.24"	82°48'04.92"
R*10"	DBN-10 (05/20)	392,661	1314,640	27°56'52.41"	82°48'58.25"
G*11"	DBN-11 (05/20)	393,297	1316,172	27°57'07.62"	82°48'51.27"



NOTES:  
 1. REFER TO SURVEY NO. 20-114.  
 2. SEE SHEET NO. 1 FOR SURVEY NOTES.





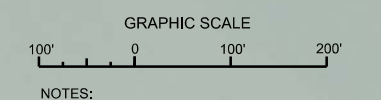

  
 US Army Corps of Engineers  
 Jacksonville District  
 SAFETY ON THIS JOB  
 DEPENDS ON YOU

DEPARTMENT OF THE ARMY  
 JACKSONVILLE DISTRICT, CORPS OF ENGINEERS  
 JACKSONVILLE, FLORIDA

Designed by: WRM  
 Drawn by: WRM  
 Checked by: GHR  
 Date: MAY 2020

GULF INTRACOSTAL WATERWAY  
 CALOOSAHATCHEE RIVER  
 PINELLAS COUNTY, FLORIDA  
**HYDROGRAPHIC EXAM SURVEY FY20**  
**9-FOOT PROJECT**  
 STA. 43+00 THRU STA. 79+00 CUT P-35  
**PLAN**

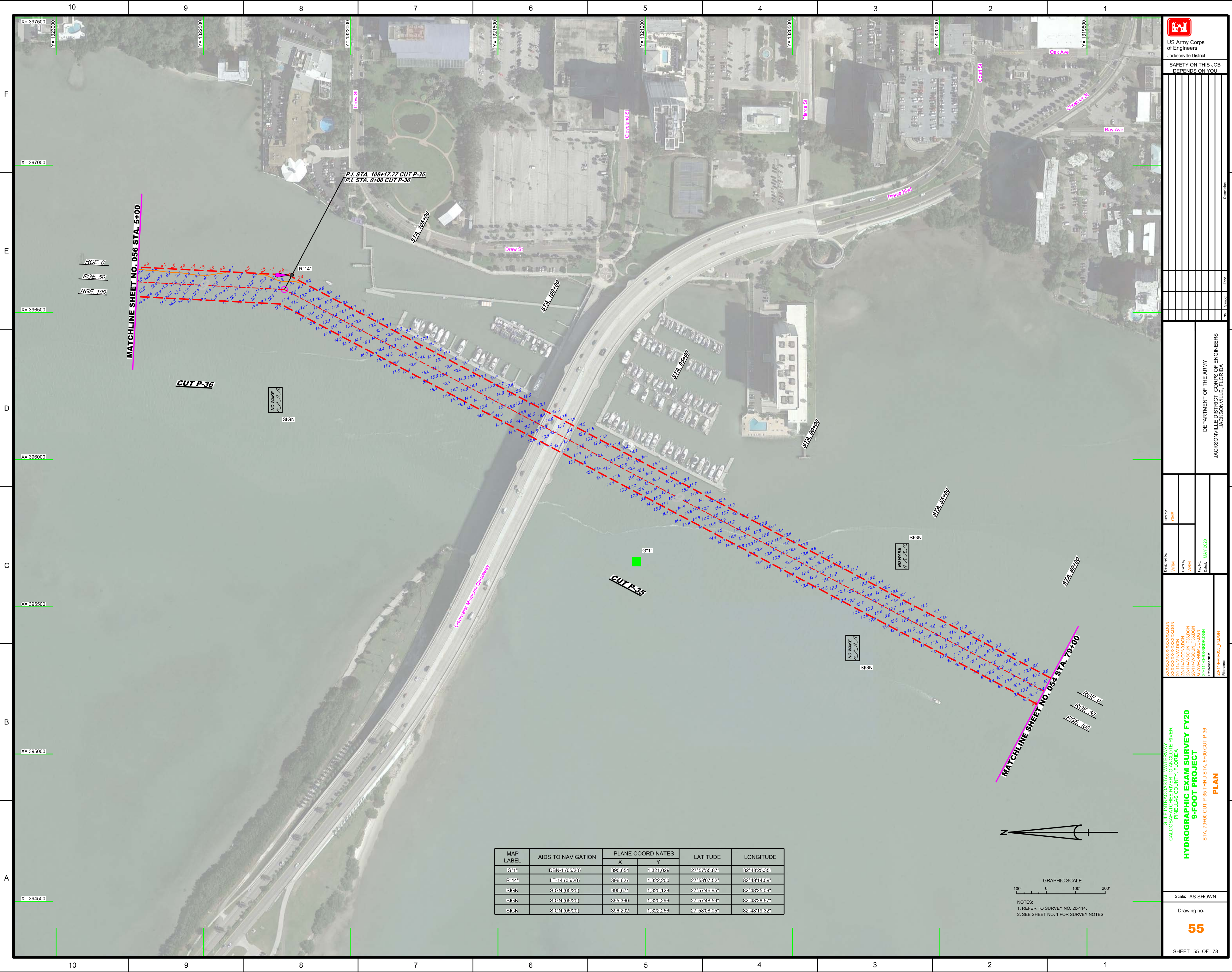
MAP LABEL	AIDS TO NAVIGATION	PLANE COORDINATES		LATITUDE	LONGITUDE
		X	Y		
R*12*	LT-12 (05/20)	394,660	1,318,475	27°57'30.51"	82°48'36.24"
G*13*	DBN-13 (05/20)	394,823	1,319,079	27°57'36.50"	82°48'34.47"



NOTES:  
 1. REFER TO SURVEY NO. 20-114.  
 2. SEE SHEET NO. 1 FOR SURVEY NOTES.

Scale: AS SHOWN  
 Drawing no.  
**54**  
 SHEET 54 OF 78





MATCHLINE SHEET NO. 056 STA. 5+00

MATCHLINE SHEET NO. 054 STA. 79+00

CUT P-36

CUT P-35

STA 108+00

STA 107+00

STA 98+00

STA 97+00

STA 96+00

STA 95+00

RGE 0  
RGE 50  
RGE 100

RGE 0  
RGE 50  
RGE 100

NO WAKE  
SIGN

NO WAKE  
SIGN

NO WAKE  
SIGN

P.I. STA. 108+17.77 CUT P-35  
P.I. STA. 0+00 CUT P-36

R<sup>14</sup>

G<sup>1</sup>

Crawfisher Memorial Causeway

Pierce Blvd

Oak Ave

Bay Ave

Count St

Cleveland St

Palmer St

Drew St

10	9	8	7	6	5	4	3	2	1
F									
E									
D									
C									
B									
A									

X=397500 Y=1323000  
X=397000 Y=1322500  
X=396500 Y=1322000  
X=396000 Y=1321500  
X=395500 Y=1321000  
X=395000 Y=1320500  
X=394500 Y=1320000

US Army Corps of Engineers  
Jacksonville District  
SAFETY ON THIS JOB  
DEPENDS ON YOU

---

DEPARTMENT OF THE ARMY  
JACKSONVILLE DISTRICT, CORPS OF ENGINEERS  
JACKSONVILLE, FLORIDA

---

Call by: GHR  
Designed by: WRM  
Drawn by: WRM  
File No: 20-114-0001  
Date: MAY 2020

---

XXXXXXXXXXXXXXXXXXXX.DGN  
XXXXXXXXXXXXXXXXXXXX.DGN  
20-114-0001\_P36.DGN  
20-114-0001\_P35.DGN  
20-114-0001\_P34.DGN  
20-114-0001\_P33.DGN  
20-114-0001\_P32.DGN  
20-114-0001\_P31.DGN  
20-114-0001\_P30.DGN  
20-114-0001\_P29.DGN  
20-114-0001\_P28.DGN  
20-114-0001\_P27.DGN  
20-114-0001\_P26.DGN  
20-114-0001\_P25.DGN  
20-114-0001\_P24.DGN  
20-114-0001\_P23.DGN  
20-114-0001\_P22.DGN  
20-114-0001\_P21.DGN  
20-114-0001\_P20.DGN  
20-114-0001\_P19.DGN  
20-114-0001\_P18.DGN  
20-114-0001\_P17.DGN  
20-114-0001\_P16.DGN  
20-114-0001\_P15.DGN  
20-114-0001\_P14.DGN  
20-114-0001\_P13.DGN  
20-114-0001\_P12.DGN  
20-114-0001\_P11.DGN  
20-114-0001\_P10.DGN  
20-114-0001\_P9.DGN  
20-114-0001\_P8.DGN  
20-114-0001\_P7.DGN  
20-114-0001\_P6.DGN  
20-114-0001\_P5.DGN  
20-114-0001\_P4.DGN  
20-114-0001\_P3.DGN  
20-114-0001\_P2.DGN  
20-114-0001\_P1.DGN

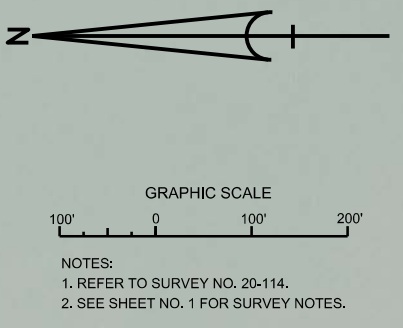
---

**HYDROGRAPHIC EXAM SURVEY FY20  
9-FOOT PROJECT**  
PLAN  
STA. 79+00 CUT P-35 THRU STA. 5+00 CUT P-36

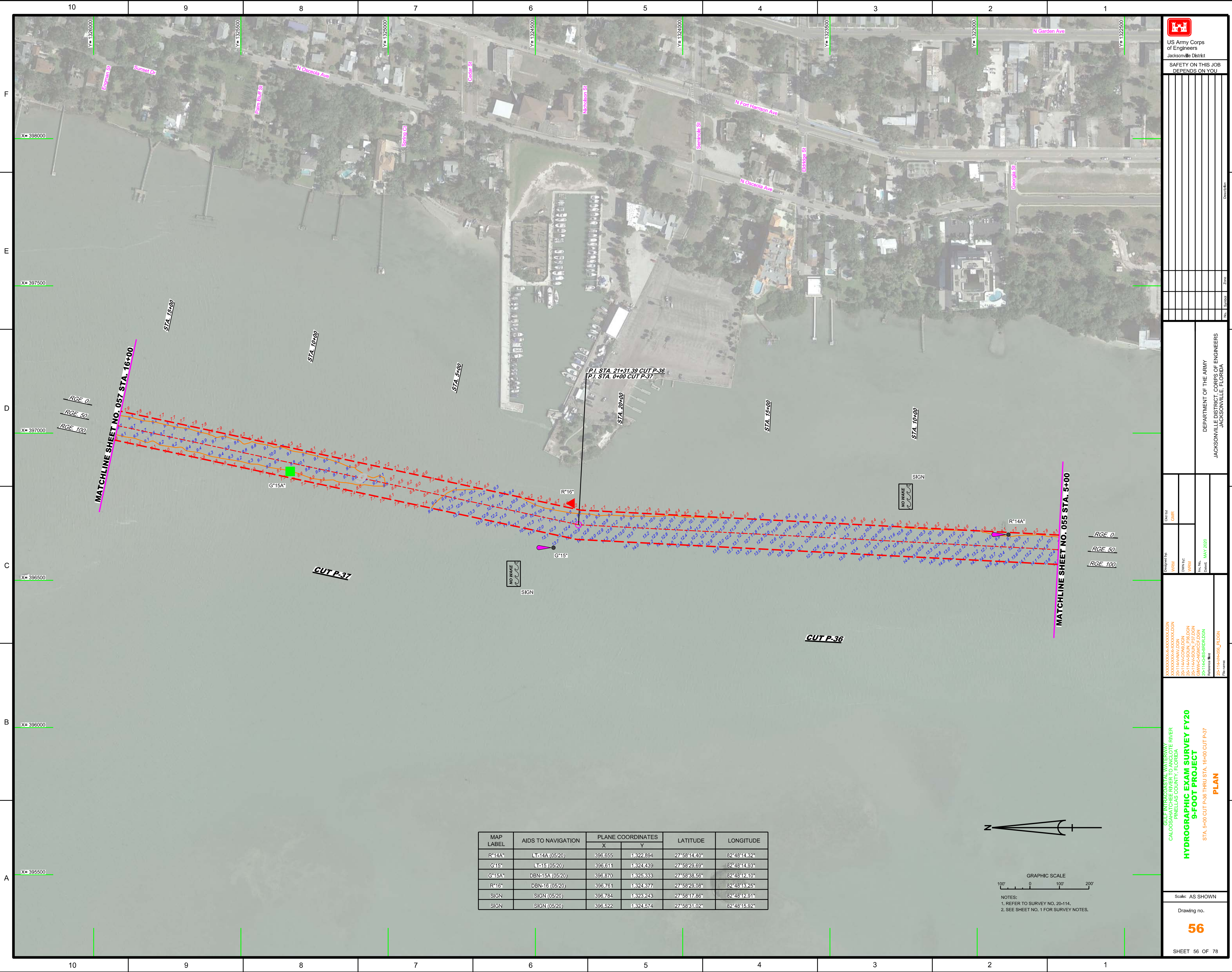
---


Scale: AS SHOWN  
Drawing no. **55**  
SHEET 55 OF 78

MAP LABEL	AIDS TO NAVIGATION	PLANE COORDINATES		LATITUDE	LONGITUDE
		X	Y		
G <sup>1</sup>	DBN-1 (05/20)	395,654	1,321,029	27°57'55.87"	82°48'25.35"
R <sup>14</sup>	L <sup>14</sup> (05/20)	396,627	1,322,200	27°58'07.52"	82°48'14.59"
SIGN	SIGN (05/20)	395,674	1,320,128	27°57'46.95"	82°48'25.09"
SIGN	SIGN (05/20)	395,360	1,320,296	27°57'48.59"	82°48'28.57"
SIGN	SIGN (05/20)	396,202	1,322,256	27°58'08.05"	82°48'19.32"







  
 US Army Corps of Engineers  
 Jacksonville District  
 SAFETY ON THIS JOB  
 DEPENDS ON YOU

DEPARTMENT OF THE ARMY  
 JACKSONVILLE DISTRICT, CORPS OF ENGINEERS  
 JACKSONVILLE, FLORIDA

Designed by: WRM  
 Drawn by: WRM  
 Checked: MAY 2020  
 File name: 20-114-00-BS-9-FOOT\_PLAN

GULF INTRACOSTAL WATERWAY  
 CALOOSAHATCHEE RIVER  
 PINELLAS COUNTY, FLORIDA  
**HYDROGRAPHIC EXAM SURVEY FY20  
 9-FOOT PROJECT**  
 STA. 5+00 CUT P-36 THRU STA. 16+00 CUT P-37  
**PLAN**

Scale: AS SHOWN  
 Drawing no.  
**56**  
 SHEET 56 OF 78

MAP LABEL	AIDS TO NAVIGATION	PLANE COORDINATES		LATITUDE	LONGITUDE
		X	Y		
R*14A	LT-14A (05/20)	396.655	1,322.894	27°58'14.40"	82°48'14.32"
G*15	LT-15 (05/20)	396.611	1,324.439	27°58'29.69"	82°48'14.93"
G*15A	DBN-15A (05/20)	396.870	1,325.333	27°58'38.56"	82°48'12.10"
R*16	DBN-16 (05/20)	396.761	1,324.377	27°58'29.08"	82°48'13.25"
SIGN	SIGN (05/20)	396.784	1,323.243	27°58'17.86"	82°48'12.91"
SIGN	SIGN (05/20)	396.622	1,324.574	27°58'31.02"	82°48'15.92"

